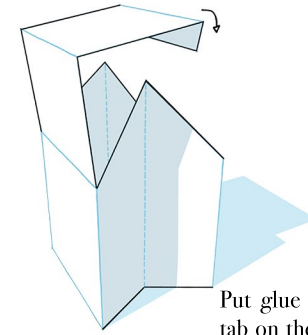
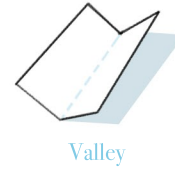
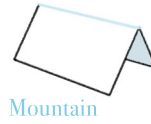


Pop-up card

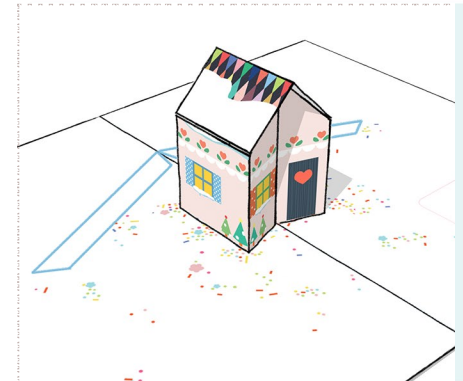
Model by Delphine Doreau, design by Etienne Doreau

1. Cut along the black lines
Fold the dotted lines as valley folds, the plain blue lines are mountain folds.
Glue A on A and B on B. The little house is mounted.



2. Put glue on the C tab and stick it on the C tab on the card. Put a little glue on the D tab, making sure not to put too much. Close the map on it, press well. As soon as it's dry, open, ooooh it's magic. We've done the hardest part!

2.

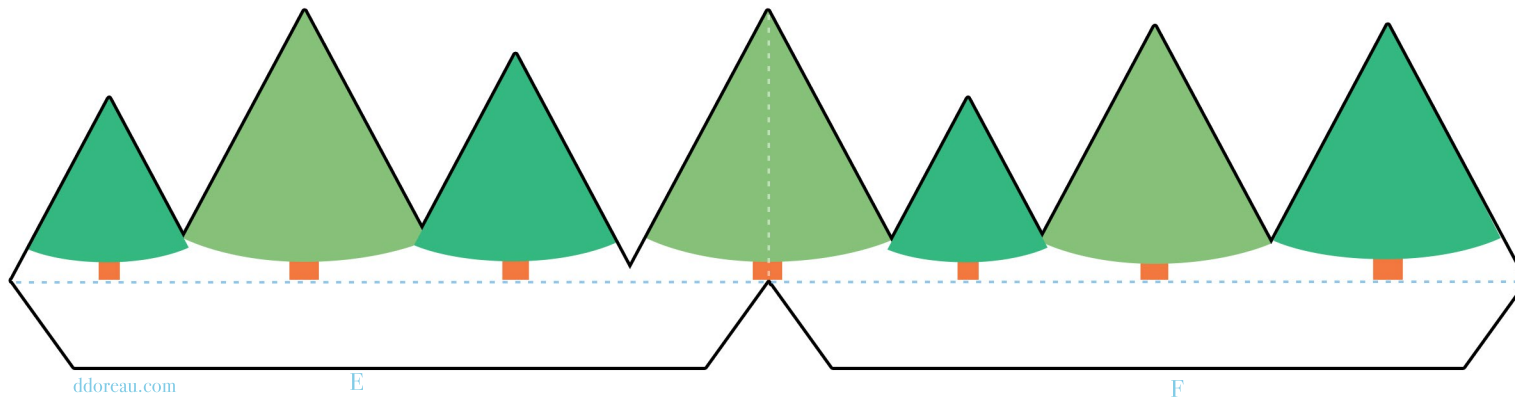
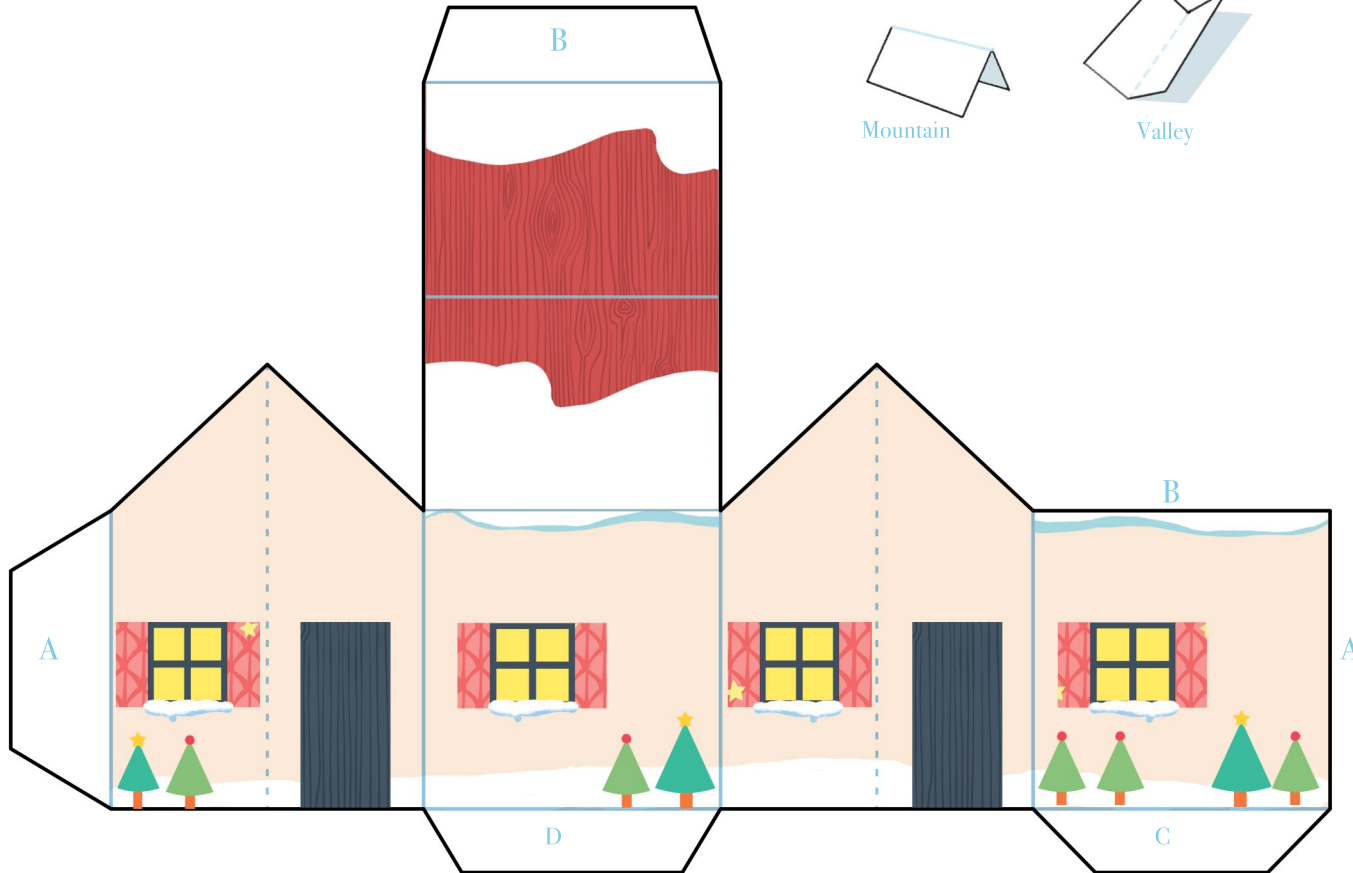


3.



Cut and fold the small evergreens, stick the E and F tabs in the noted place on the map. The central fold should be in the exact middle of the card otherwise it won't work!

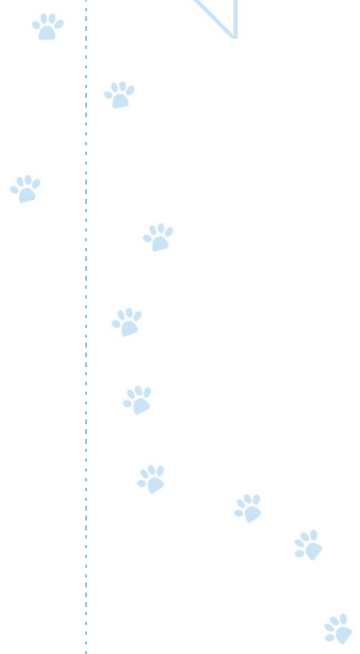
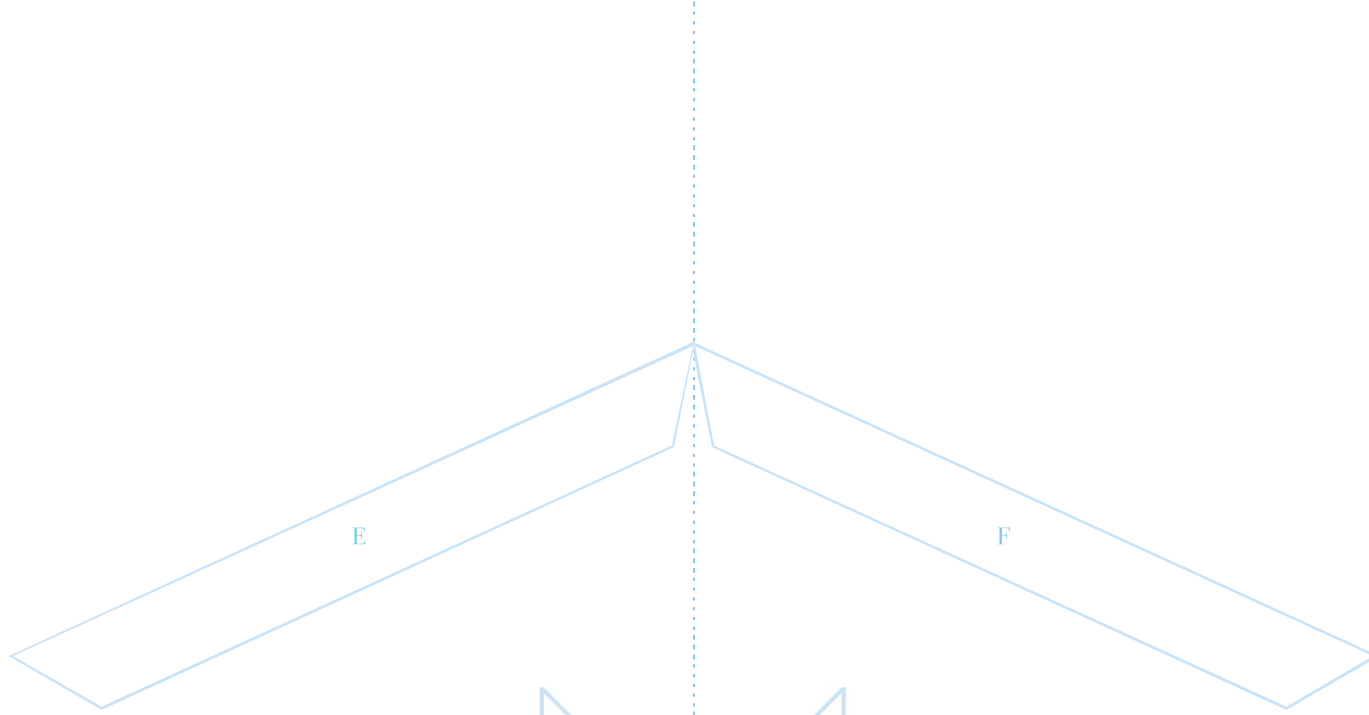
Fold and glue the cover on the back, add a little happy note: it's over!



ddoreau.com

E

F



Three horizontal dashed lines for writing, enclosed in a rounded rectangular box.